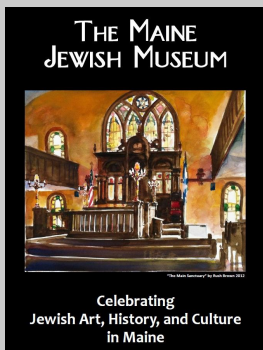




Celebrating Jewish Art, History, and Culture in Maine

THE MAINE JEWISH MUSEUM



Maine Jewish Museum
267 Congress St
Portland, Maine 04101
207-773-2339
mainejewishmuseum.org

Hours: M-F 10:00-2:00
Often later, call ahead.
NOW OPEN SUNDAYS
1:00-5:00

Ani Helmick
Executive Director
anihelmick@gmail.com
207-400-7510 (cell)

Nancy Davidson,
Curator in Residence
nancyd.mjm@gmail.com
207-239-4774 (cell)

Opening This Week in the Fineberg Family Community Room:

Graphic Realities: 3 Printmakers

Jean Banquer, Chris Beneman, Jeanne O'Toole-Hayman

The Maine Jewish Museum presents "Graphic Realities," an exhibition of works by three Peregrine Press printmakers (current and former) which celebrates the diverse genre of printmaking.

Christine Beneman's series was sparked by an early spring walk along New York's High Line park. Her prints are constructed using a combination of processes; collagraphs, monoprint and trace monotypes. Most of the pieces are then cut out and layered.

Jeanne O'Toole-Hayman's series of prints is a reinterpretation and reconnection to iconic female figures from art history. She uses paper plate lithography, drypoint and relief printing to create new prints and new collages from past and current material.

Jane Banquer's work represents images taken from seacoast Maine locations (and more) and interpreted in black and white and color reduction woodcuts.

JANUARY 15 - MARCH 13, 2015

Opening Reception with the Artists: **THUR, JAN. 15, 5:00-7:00pm**

Artist Talk: **JAN 25, 2:00pm**

First Friday Art Walks: **FEB. 6 & MARCH 6, 5:00-8:00pm**

curated by Nancy Davidson



Jeanne O'Toole-Hayman



Chris Beneman HighLine Variation II

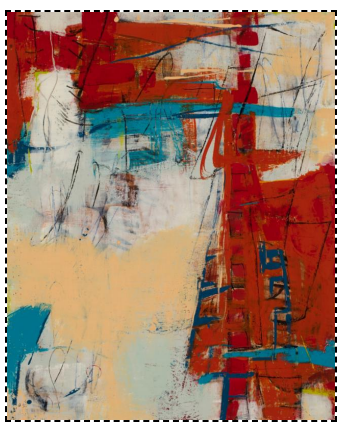


Jean Banquer Path to the Beach

Continuing in the Spiegel Art Gallery: **Diane Bowie Zaitlin** undercurrents

THROUGH MARCH 8th

This exhibit shows Diane Bowie Zaitlin's contemporary approach to the ancient medium of encaustic in combination with drawing, written word, and antique papers.



Artist Talk: Sunday, February 8, 3:00pm
First Friday Art Walks: February 6 and March 6, 5:00-8:00pm

Diane Bowie Zaitlin

The mission of the Maine Jewish Museum is to honor the contributions and diversity of Maine's Jewish immigrants in the context of the American experience. Through exhibits and programming, the Museum seeks to build bridges of appreciation and understanding with people of all backgrounds.

Join us in celebrating Jewish ART, HISTORY and CULTURE in Maine.

207-773-2339 www.mainejewishmuseum.org
Ani Helmick, Executive Director

[Forward this email](#)



This email was sent to gleckman@mindspring.com by anihelmick@gmail.com | [Update Profile/Email Address](#) | Rapid removal with [SafeUnsubscribe™](#) | [Privacy Policy](#).



Maine Jewish Museum | 267 Congress St | Portland | ME | 04101